



Centraal Bureau
voor de Statistiek

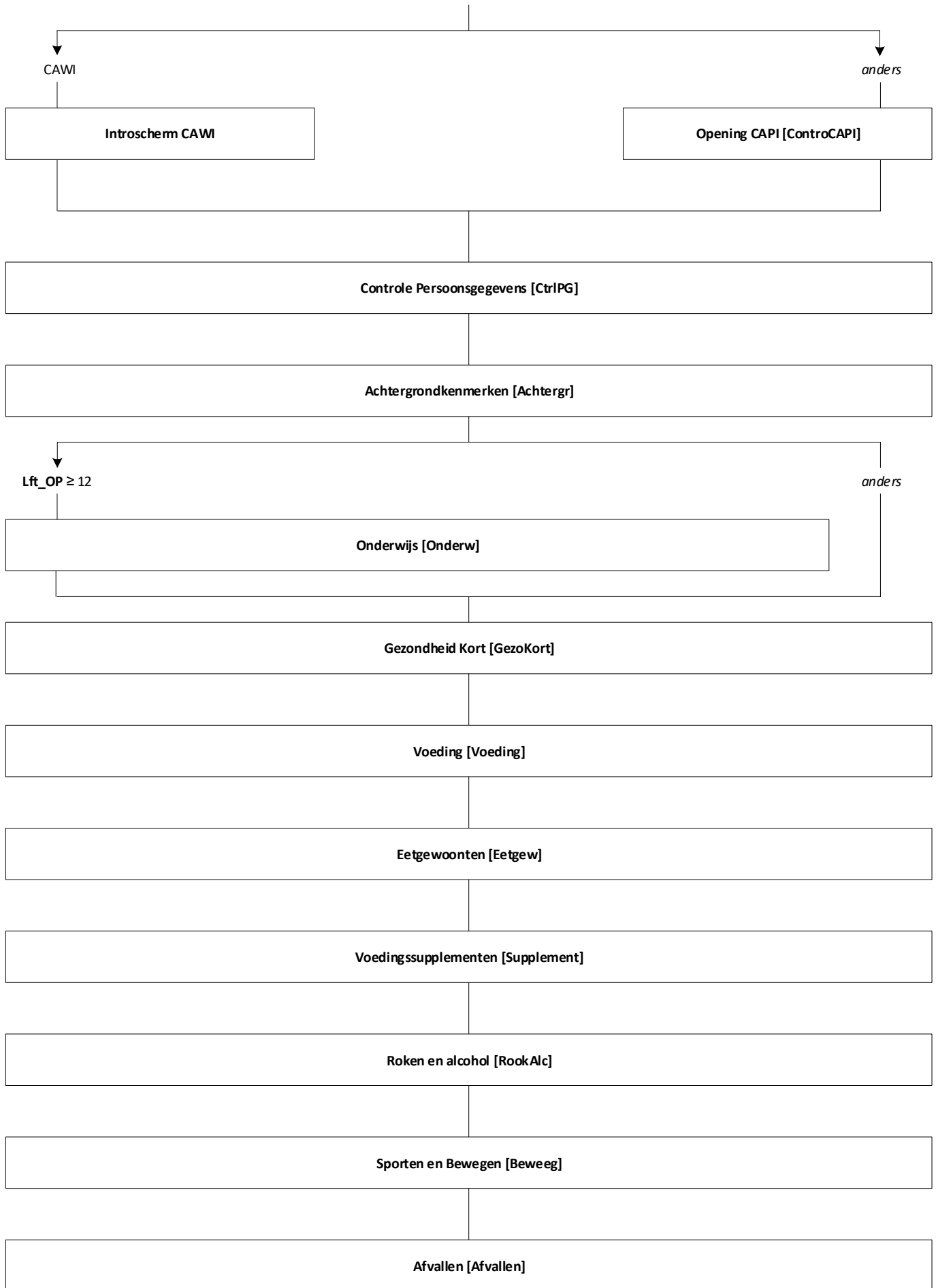
Belevingen 2022

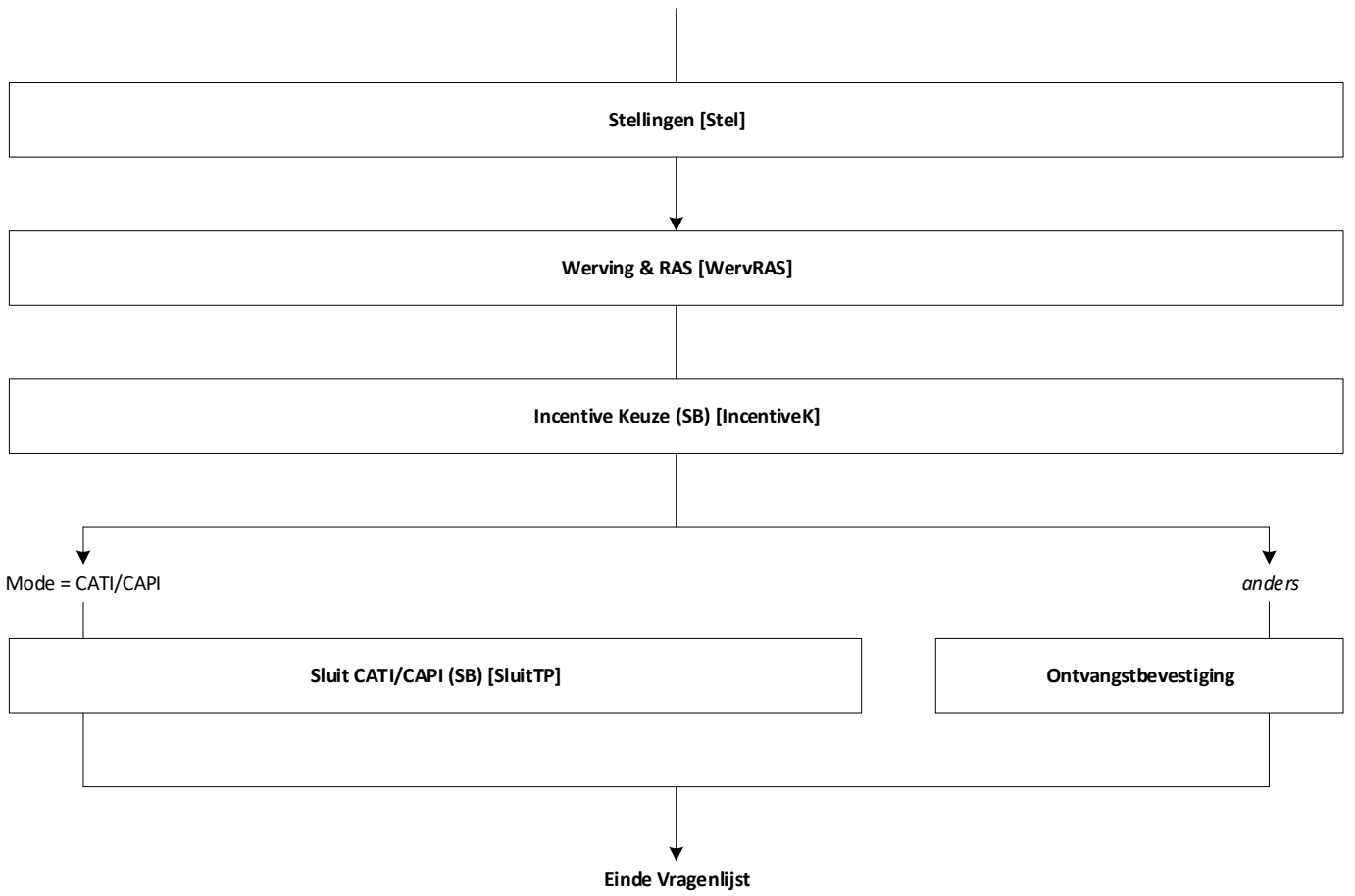
Jeanne Heil & Loes Muijsers

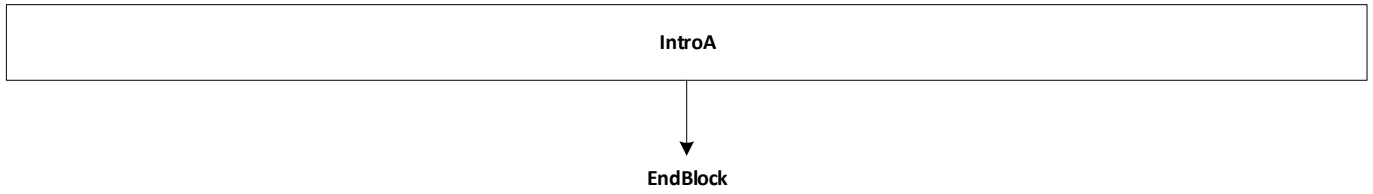
Versie: 1.12
Datum: 1-2-2022

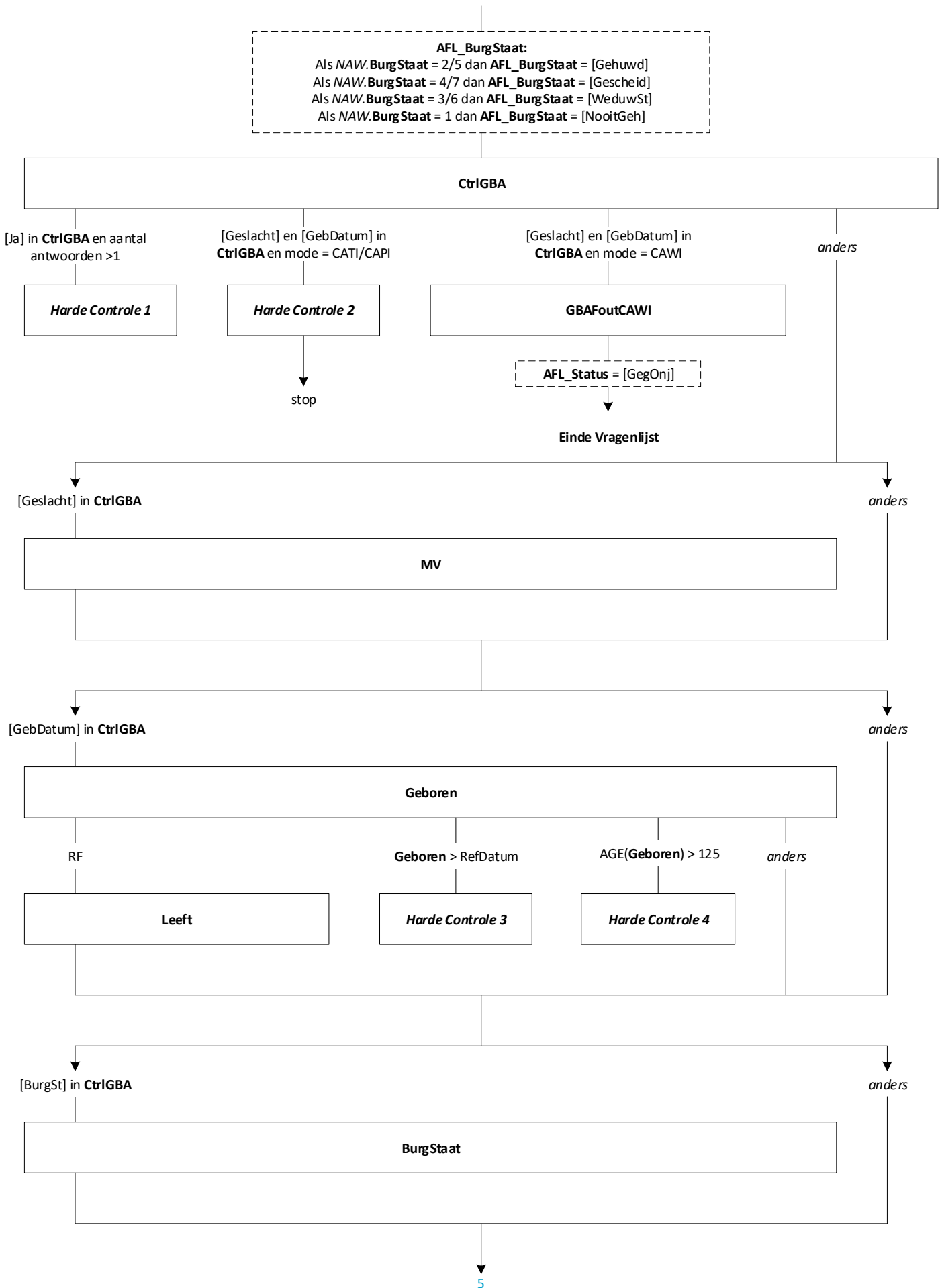


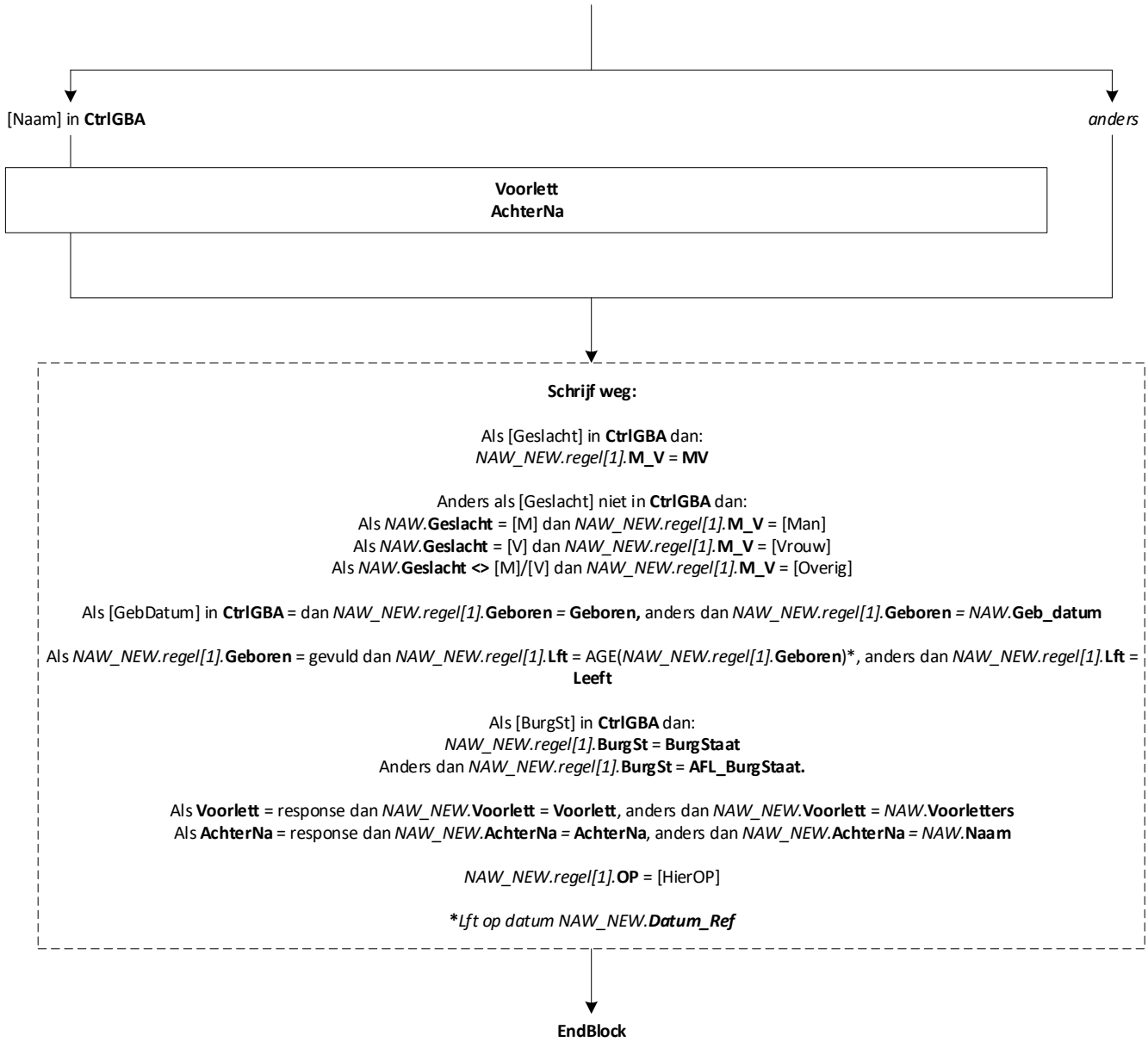
Blokkenschema

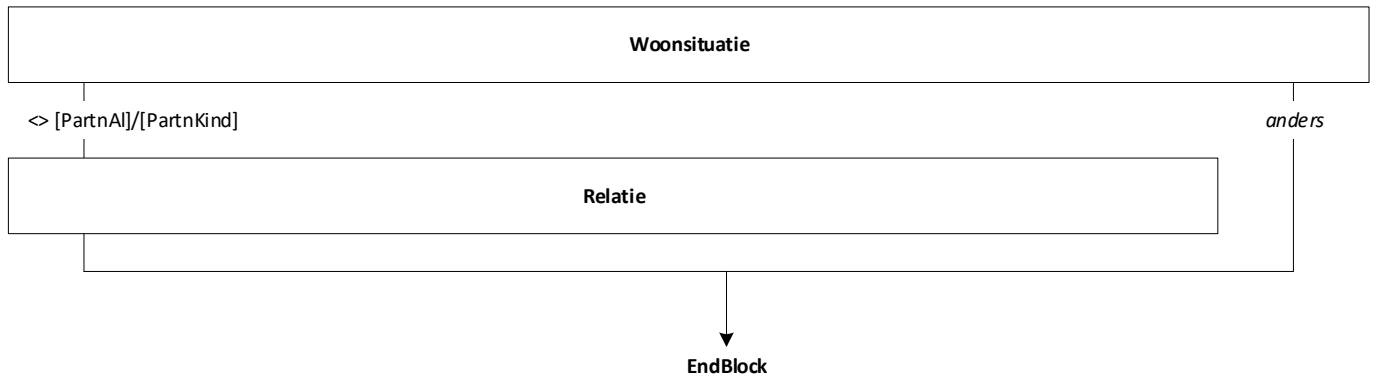


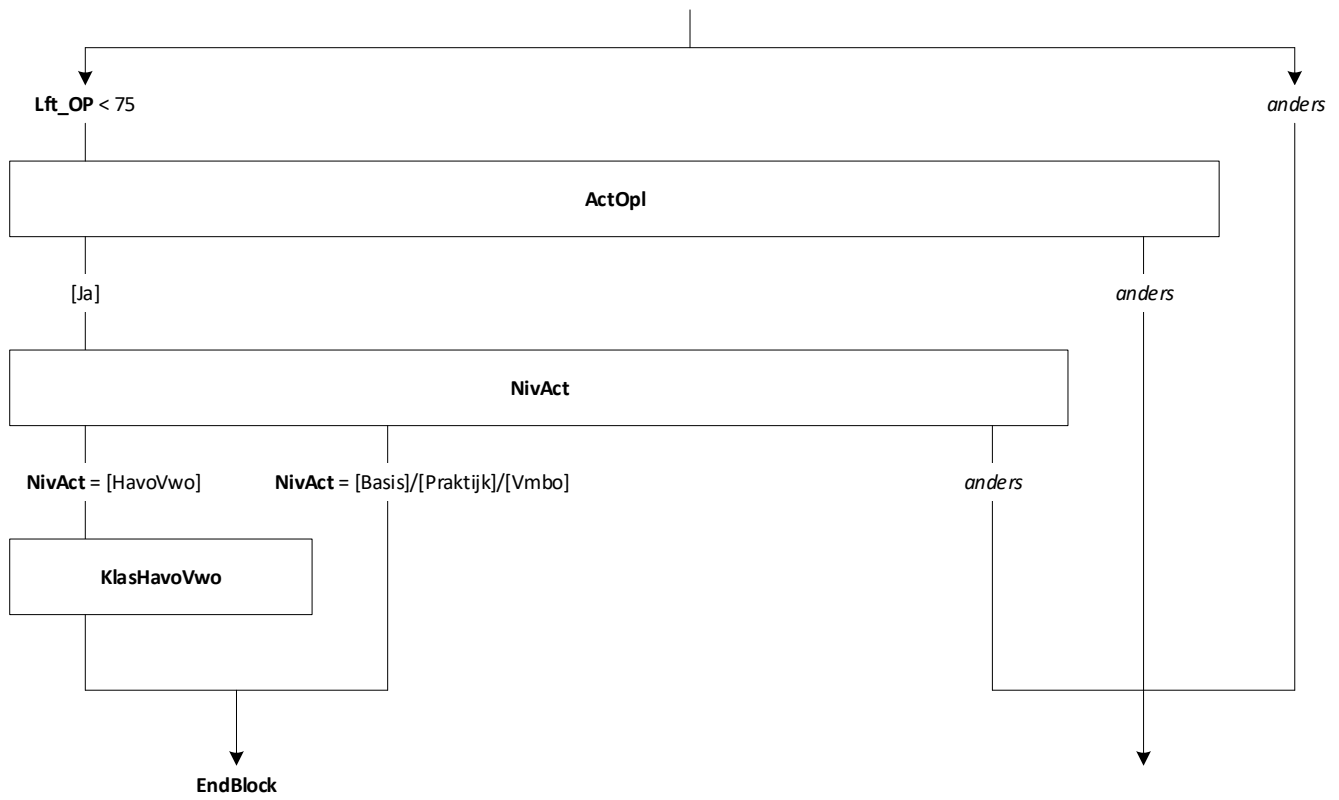


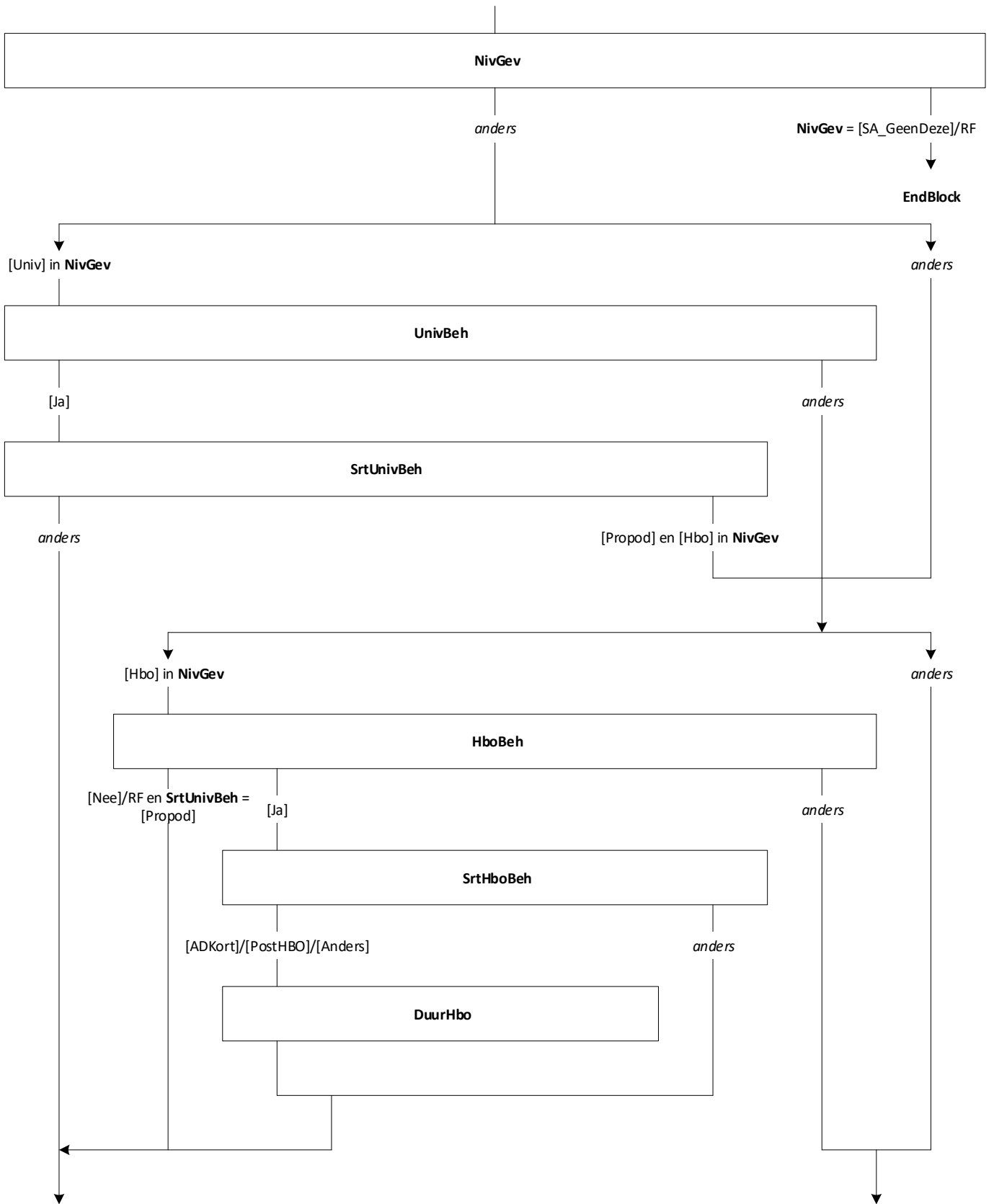


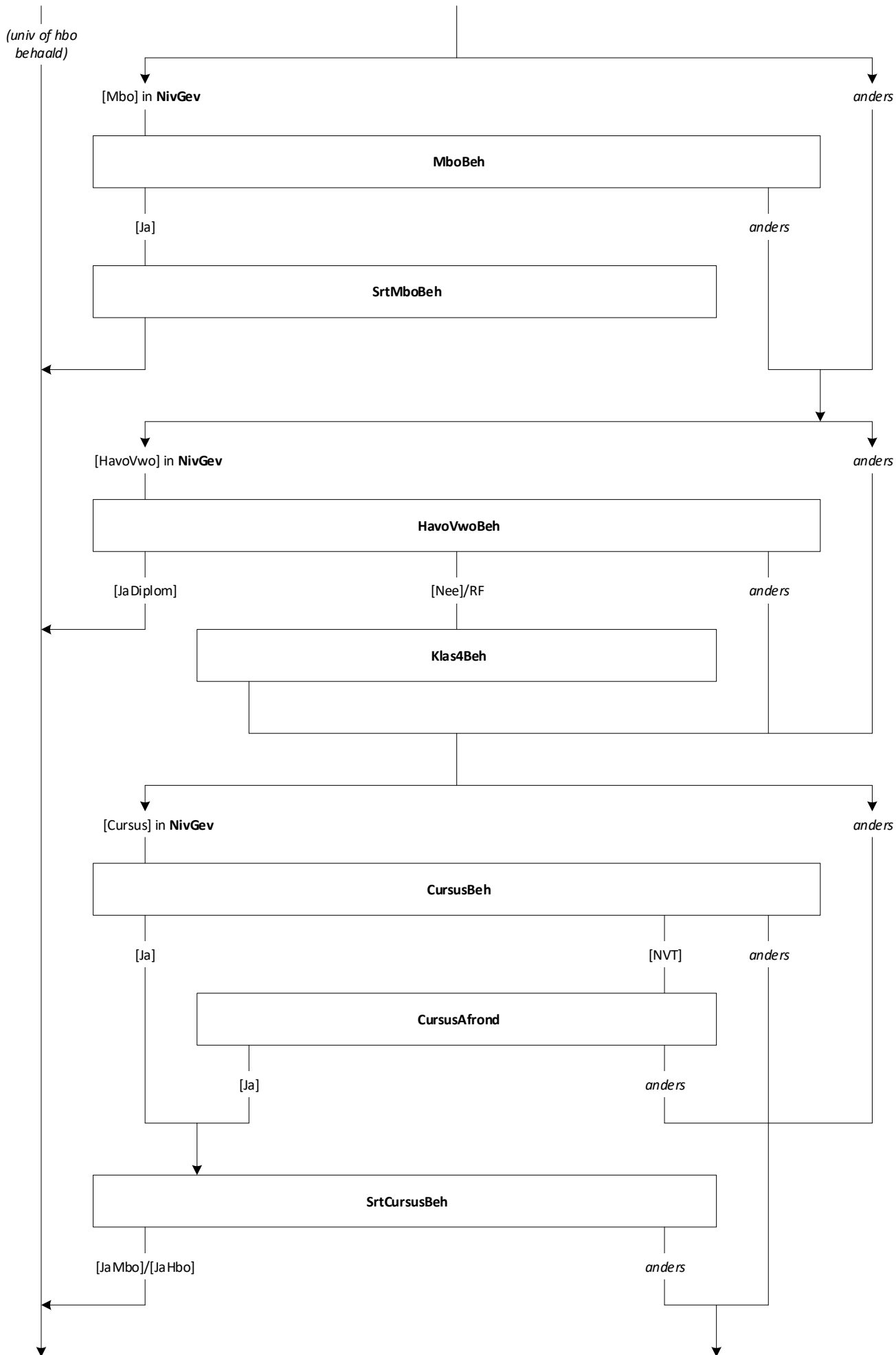


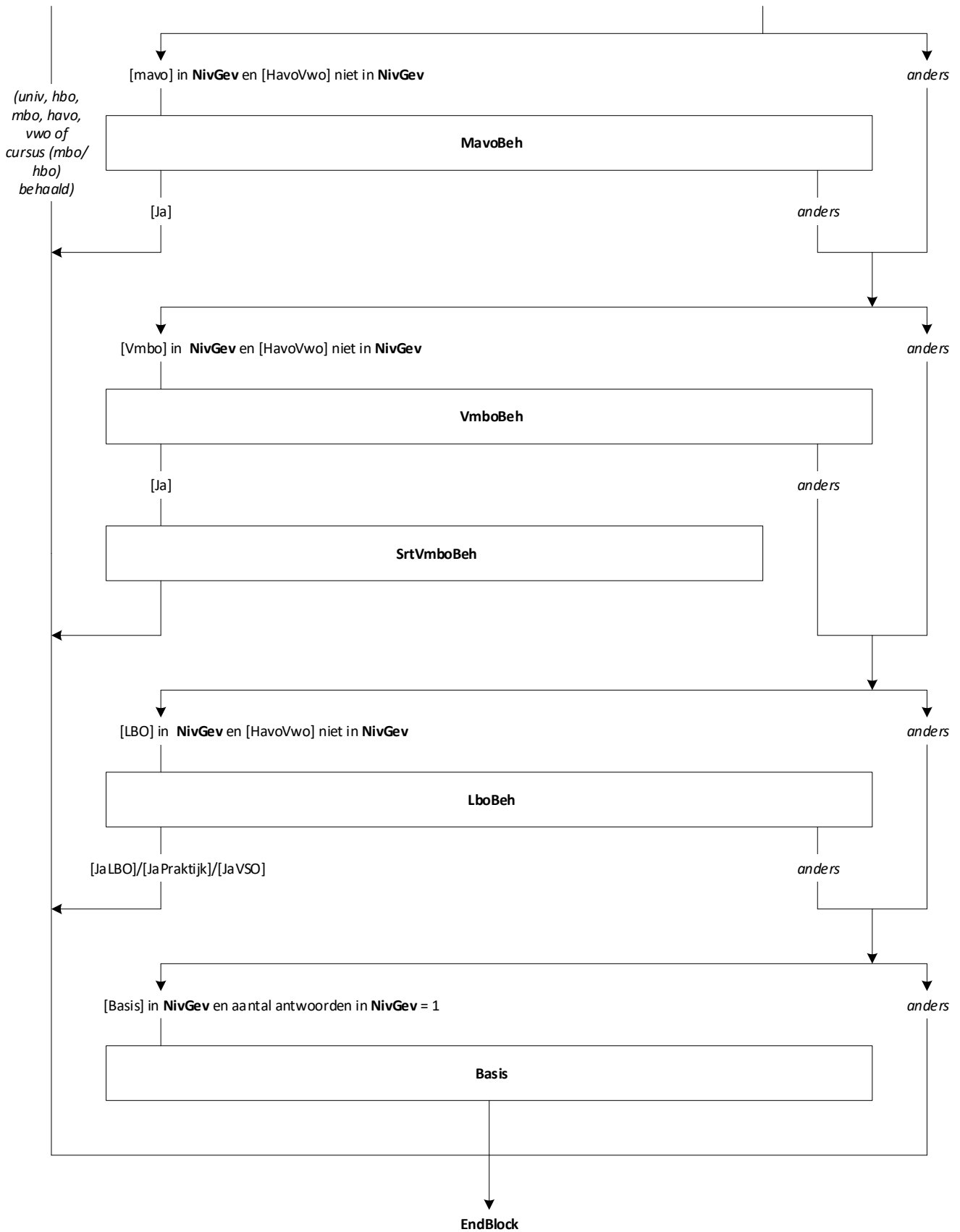


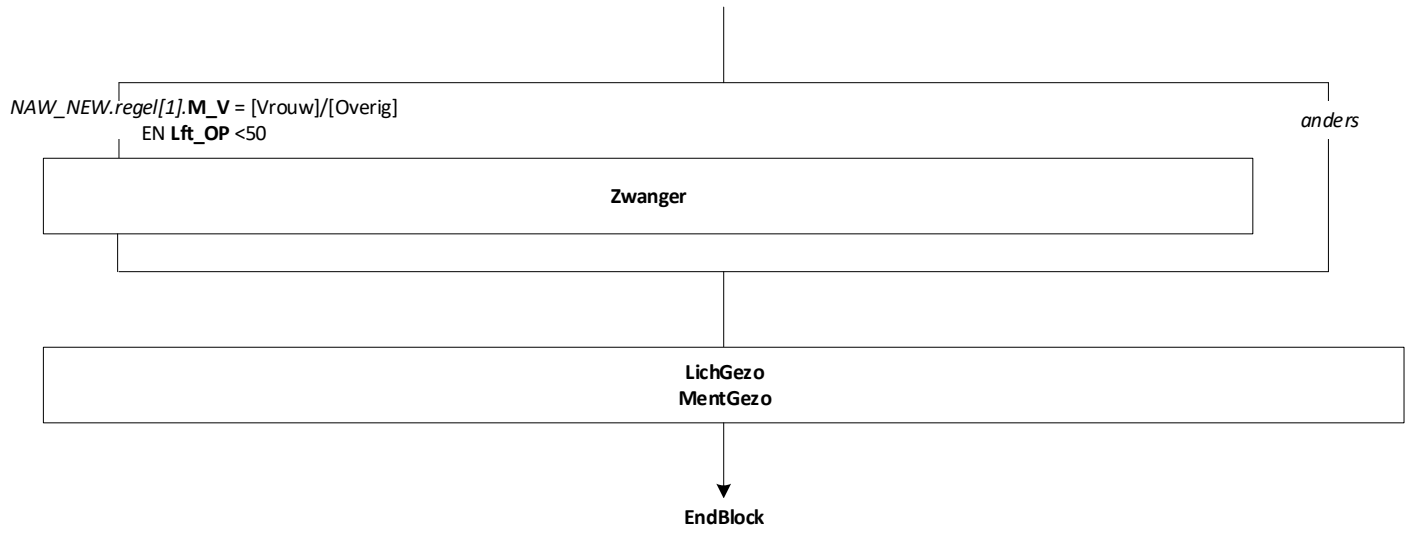


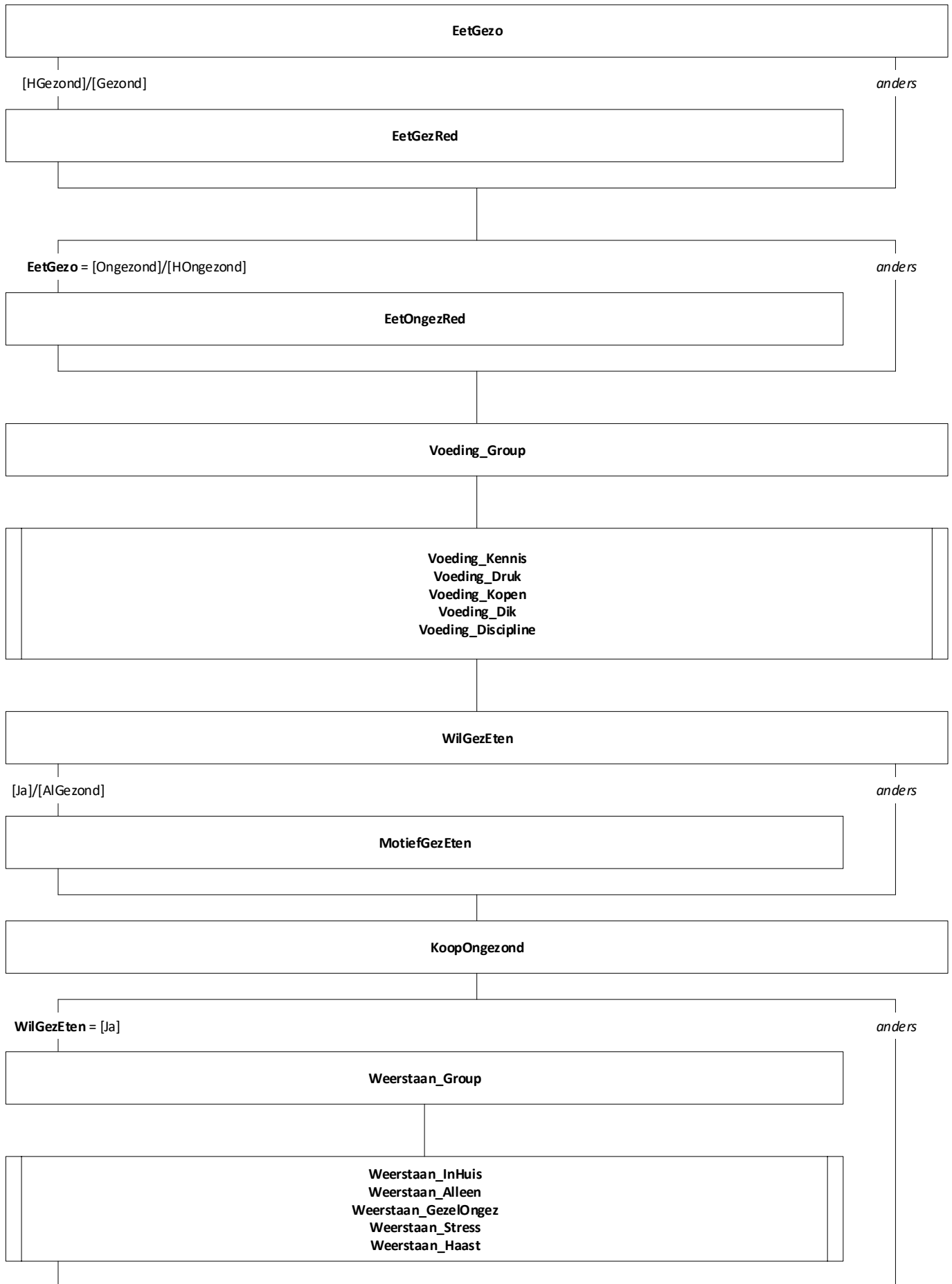






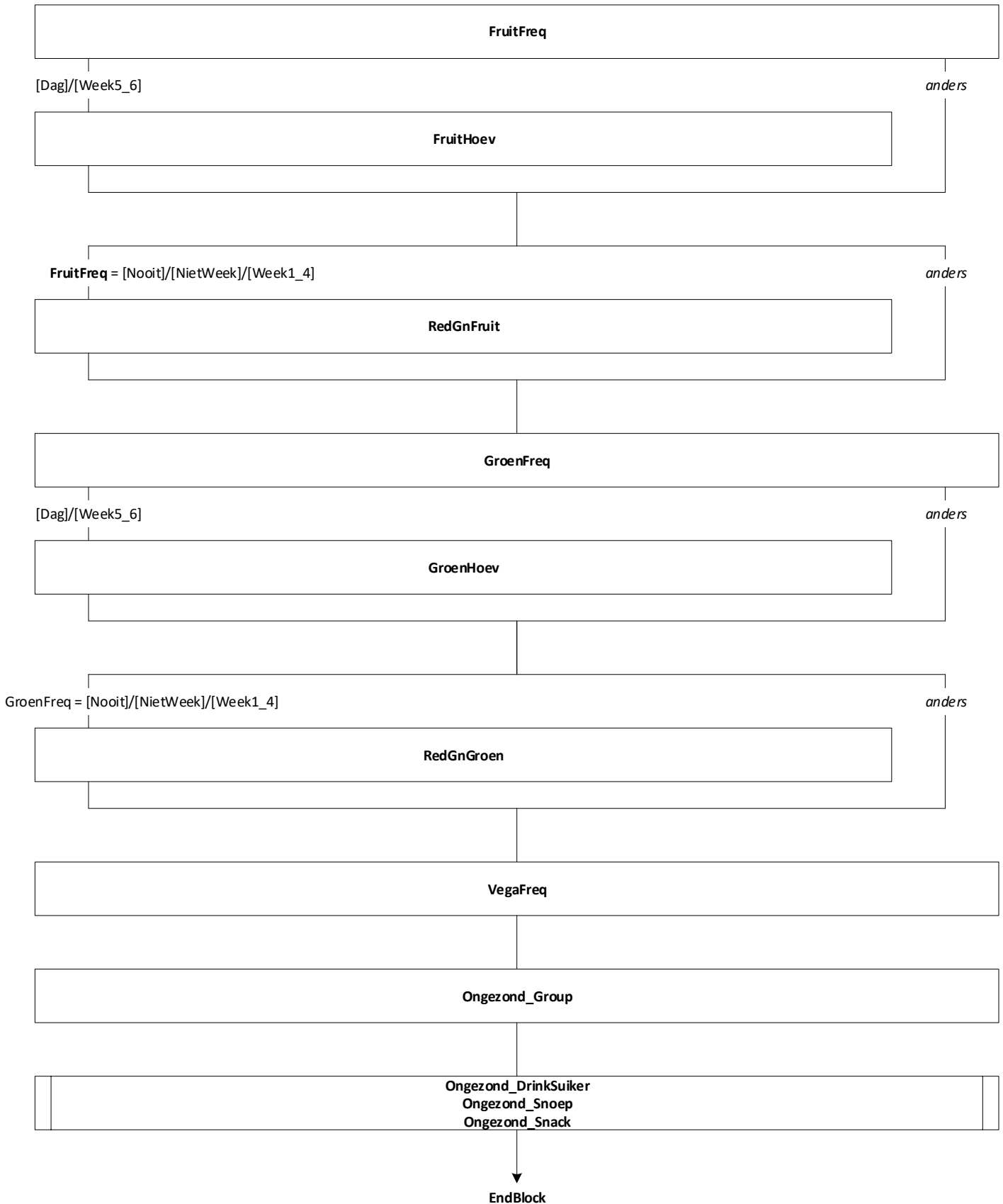


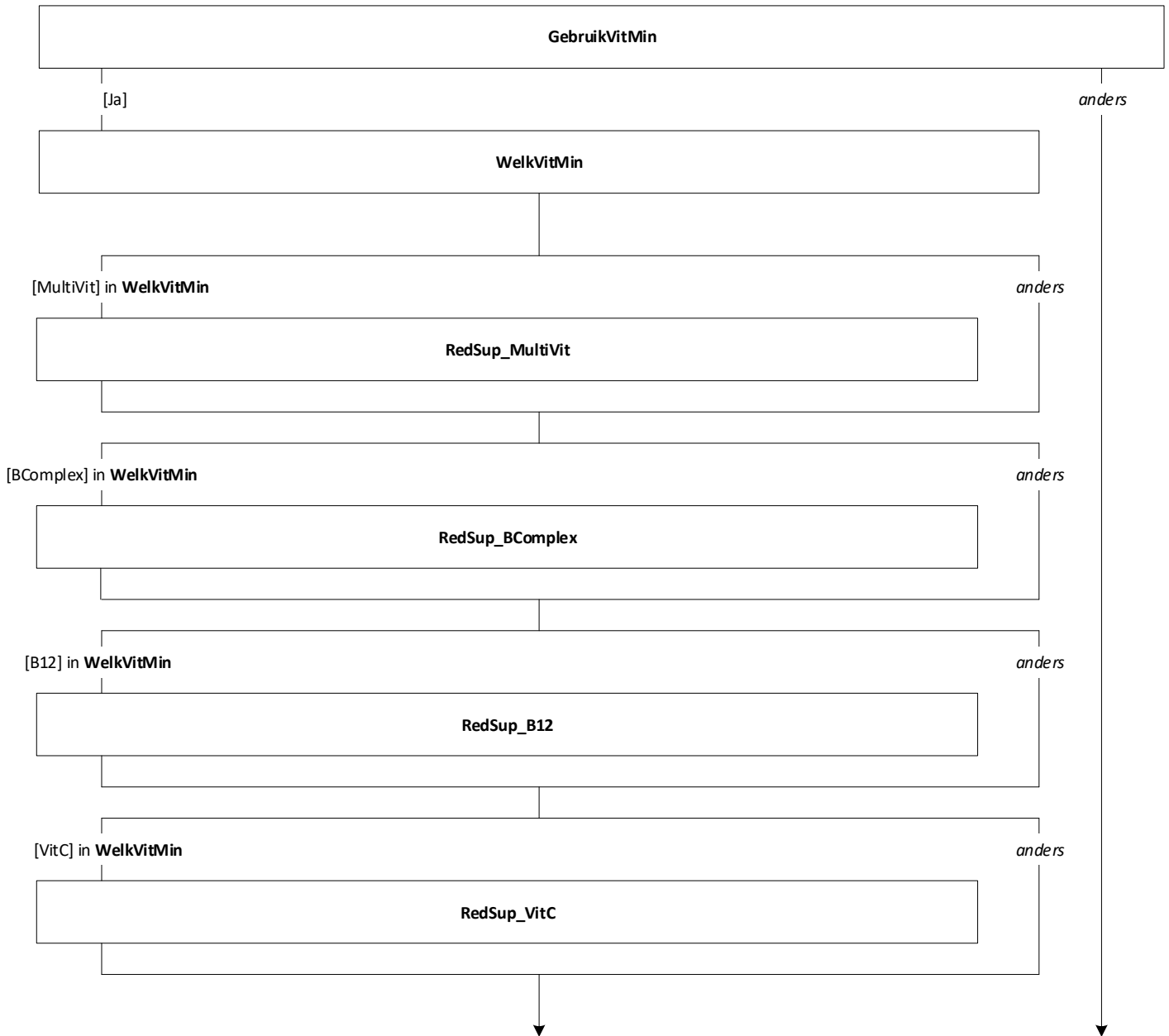




**BelangSmaak
BelangGezo
Verpakking
InvloedInfo**

EndBlock





[VitD] in WelkVitMin

anders

RedSup_VitD

OP
neemt
geen
supple-
menten

[AndrVit] in WelkVitMin

anders

RedSup_AndrVit

[Ijzer] in WelkVitMin

anders

RedSup_Ijzer

[Calcium] in WelkVitMin

anders

RedSup_Calcium

[Magnesium] in WelkVitMin

anders

RedSup_Magnesium

[AndrMin] in WelkVitMin

anders

RedSup_AndrMin

RedSup_MultiVit = [Klachten]/RedSup_BComplex = [Klachten]/RedSup_B12 = [Klachten]/
RedSup_VitC = [Klachten]/RedSup_VitD = [Klachten]/RedSup_AndrVit = [Klachten]/RedSup_Ijzer =
[Klachten]/RedSup_Calcium = [Klachten]/RedSup_Magnesium = [Klachten]/RedSup_AndrMin = [Klachten]

anders

SupKlacht

